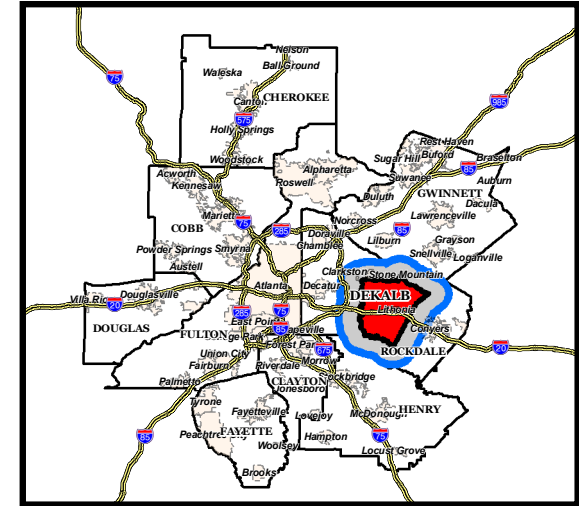
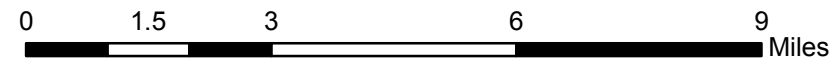
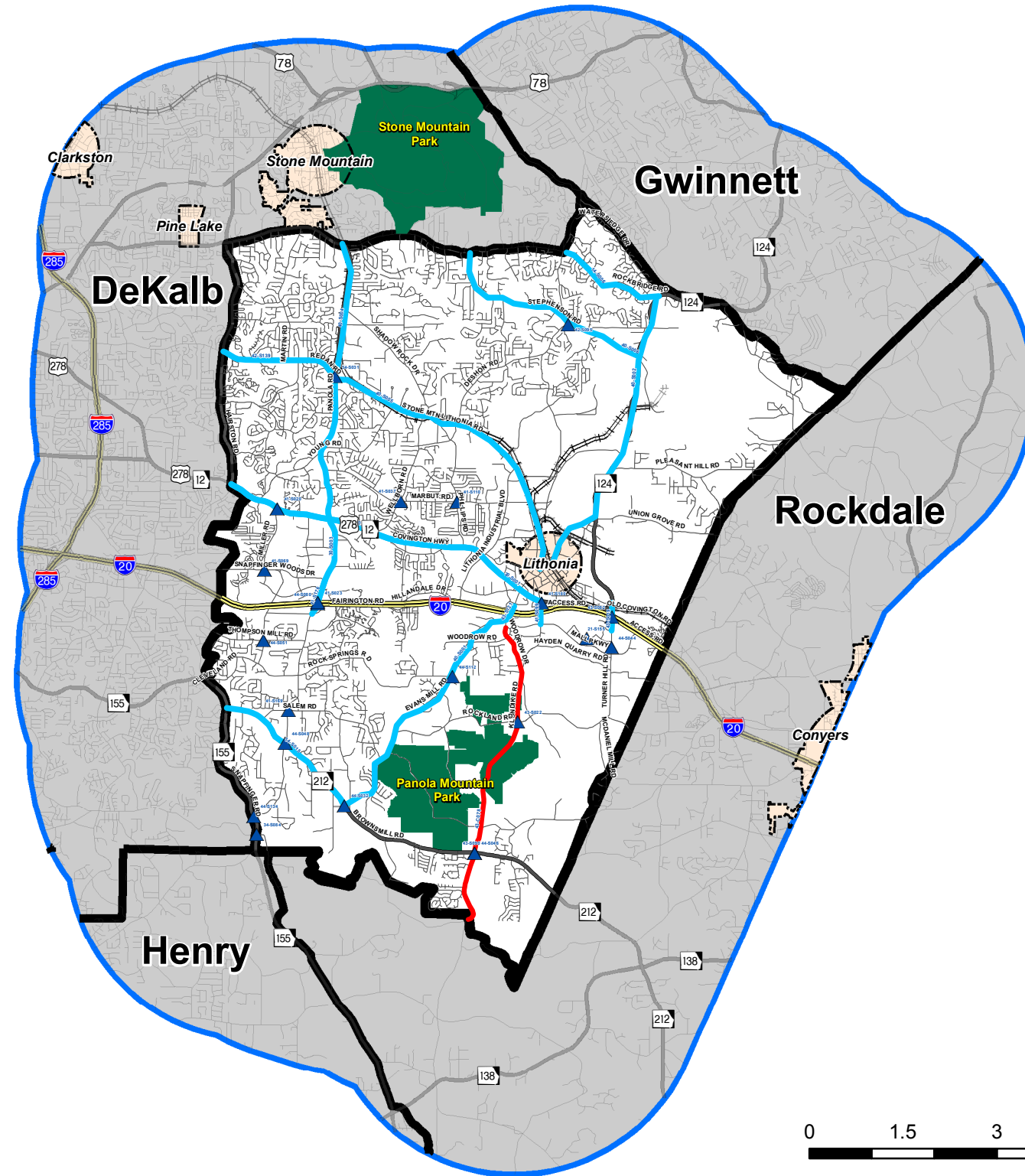




# DeKalb County Comprehensive Transportation Plan

## Southeast Quadrant - Potential Program of Projects (Operational/Safety/ITS)



Map 3-22

### Legend

#### DeKalb CTP Potential Program of Projects (Operational/Safety/ITS)

- Operational / Safety / ITS - Point Locations (Includes Signals, Intersection Improvements, and Area Improvements)
- ITS Corridor Improvements
- Operational Improvements

#### Road Network

- Interstate Highway
- State Route / U.S. Highway
- Other Roads

#### Other Layers

- Railroad
- Southeast Quadrant Boundary
- 3 Mile Buffer of Southeast Quadrant
- City Limits
- Park / Recreational Areas

Source: ARC, DeKalb County, and DWA, Inc.

This map is intended for planning purposes only.

